

WHAT WE KNOW

Hall Family Foundation
2025 Annual Report



05

History, Mission
& Values

08

Introduction

09

President's Letter

11

Showing Up Earlier

23

Standing Stronger
Together

35

Staying Persistently
Present

43

Creating Paths
Forward

54

Financials

55

2025 Partners

For eight decades, the Hall Family Foundation has remained steadfast to the principles of Joyce and Elizabeth Hall: *“Dedicated to enhancing the quality of human life for all in the Greater Kansas City area.”*

Joyce “J.C.” Hall was relentless in his ambition. He matched this ambition and dreams of what Kansas City could be with his unwavering commitment to excellence. Embracing this mindset, we have pursued similar ambitions and dreams to envision what Kansas City might look like for future generations because of our shared efforts today.

Guided by the wisdom of the Hall family and the commitment of our Board of Directors, the Foundation exists to ensure *all people in Kansas City thrive*.



ALL IN KANSAS CITY THRIVE

A photograph of a young woman with long, dark, curly hair playing an acoustic guitar. She is looking down at the instrument. The background is slightly blurred, showing what might be a recording studio or rehearsal space with microphones and stands.



Mission

The Hall Family Foundation is a private philanthropic organization dedicated to enhancing the quality of human life in the Greater Kansas City area. Initiatives that enrich the entire community, help all people, and promote excellence are considered to be of prime importance. The Foundation acts as both a catalyst and collaborative community partner. It seeks to invest in programs that are innovative and strive to create systemic solutions to community needs.

Values

At our core we subscribe to values that help increase our impact. **Humility.** We are a piece of a larger puzzle and strive daily to recognize it takes many to achieve our goals. We value each other and our partners and we treat them with kindness and respect. **Excellence.** We believe in the importance of high aspirations, continuous improvement, and accountability. We expect this from ourselves, our partners, and in all we do. We know excellence is not exclusive, and perfection is not the goal, but that continuous progress is. **Collaboration.** We believe it is important to work with individuals and groups representing different backgrounds, lived experiences, desires, interests, and challenges to learn and understand diverse perspectives and accomplish goals aligned with our mission and strategy. **Innovation.** We recognize there is more than one way to solve a problem. We value creativity, curiosity, and courage to move closer to solutions. **Catalyst.** We see our role as developing and proposing ideas, connecting people, leading, and partnering, with the goal of advancing *all*.

History

The mission of the Hall Family Foundation, established in 1943, stems from the original purposes of its founders: Joyce C. Hall; his wife, Elizabeth Ann Hall; and his brother, Rollie B. Hall.

As outlined in the original bylaws, the Hall family intended that the Foundation should promote: the health, welfare and happiness of school-age children; the advancement and diffusion of knowledge; activities for the improvement of public health; and advancement of social welfare. These objectives were based on a family resolve to help people and enhance quality of life. More than eighty years later, their legacy lives on.

Joyce C. Hall was born on August 29, 1891, in David City, Nebraska. He was a plain-spoken individual with a respect for hard work and an unwavering commitment to quality. Mr. Hall came to Kansas City in 1910, and, starting with a shoebox full of cards and a rented YMCA room, began the business that was to become Hallmark Cards, Inc. In 1921, Joyce Hall married Elizabeth Ann Dilday. Together they built a life dedicated to family and community. Together they created the Foundation that nurtures and strengthens the city they loved.





2



5

For decades, the Hall Family Foundation has invested in Kansas City. But investment alone does not create progress. Families do. Progress lives in the movement they make every day, often quiet, often unseen, between a moment of uncertainty and a step toward stability.

This report lifts up those movements. It captures what becomes possible when support arrives early enough to matter, stays long enough to build momentum, and trusts families to chart their own direction. Because when families lead, progress is not a transaction; it is a transformation.

PRESIDENT'S LETTER

What Moves Us

What if we defined progress not only by what can be counted but also by what families experience in their homes and classrooms, on porches, and in late-night conversations when plans begin to take shape? In the moments when families can pause, breathe, imagine, and move toward what's next.

At the Hall Family Foundation, this question guided us throughout 2025. It pushed us beyond measures and toward deeper curiosity: How do we know families are thriving? How do we know our investments are strengthening the systems families rely on, not just supporting them through a moment?

This year, we are proud to have invested \$46.6 million in grants across Kansas City to 114 partner organizations. But progress is not defined by scale. It is defined by how support shows up over time.

We believe progress is not a finish line but a process. It is rarely linear. It is built through trust, steadiness, and alignment. It strengthens when families no longer have to retell their stories at every turn. When support feels coordinated, futures begin to reopen.

This belief has pushed us to reflect on not only what and who we fund, but also how we partner and how our choices shape the experience of families navigating multiple systems at once. It has reaffirmed our belief that families are not problems to be solved.

They are experts in their own lives, carrying knowledge, resilience, and aspirations. Our responsibility is to ensure families have the space to pause, think, plan, and rebuild, so that the supports around them reinforce, rather than constrain, that forward progress.

We do not believe we are alone in asking these questions. Across Kansas City and beyond, many nonprofit organizations and funders are grappling with what it means to define success more fully. We believe deeply that this city and this moment call for philanthropy that is willing to listen harder, learn faster, and stay present longer. Philanthropy that values dignity, choice, lived experience, data, and discipline.

That position shaped much of our work in 2025. We sharpened our focus in key priority areas—early childhood education, K-3 literacy, and economic mobility through debt reduction—while continuing to learn where our strategies need to evolve. We began geographically concentrating our investments more intentionally, recognizing that depth, coordination, and place matter if families are to experience support as connected rather than episodic. And we continued to strengthen our internal discipline so that our partnerships are grounded, responsive, and sustainable.

At the same time, we are clear-eyed about where we are still learning. Real change requires trust, time, and shared work with sustained collaboration.

None of this work happens in isolation. I am deeply grateful to the families who continue to trust us with their stories, their time, and their hopes, who remind us that thriving is not abstract, but lived. I am equally thankful for our staff, whose care, rigor, and commitment show up daily in how they listen, learn, and stay present, even when the work is complex. And I am grateful to our Board of Directors and the Hall Family, whose stewardship of this Foundation's legacy has allowed us to ask harder questions, evolve with intention, and hold firm to the belief that families deserve more than stability, they deserve the opportunity to truly thrive.

As we move into 2026, we are choosing to lead from belief rather than certainty, testing and learning alongside families and partners, even as the path forward continues to take shape.

Our focus remains on how families move through systems, how support shows up across life stages, and how progress compounds when care, coordination, and trust are held together.

This work is ongoing. It will continue to evolve as families' needs evolve and as our understanding deepens. What remains constant is our line of sight: a Kansas City where *all* families are supported not just to get through today, but to invest confidently in what comes next.

Kansas City thrives when families thrive. And progress is not finished, it is being built, deliberately and together, *For All*.



Mayra Aguirre
President, Hall Family Foundation





*What does early support
make possible for families?*

SHOWING UP EARLIER

It starts in small moments. A knock on the door before a crisis deepens. A conversation early enough to change what comes next. A family realizing that support is closer and more connected than they expected.

**Showing up early is not about speed.
It's about alignment.**

It's recognizing when support can ease pressure – not just responding after it has compounded. When trust can form before fear takes hold. When care feels steady and families are ready to build.

Early support allows families to move out of reaction and into possibility. It creates space to plan. To ask questions. To imagine what comes next. When this happens, momentum doesn't rush ahead – it stabilizes. It creates room for other supports to join. It sets the conditions for a future to be shared, sustained, and strengthened over time.



For families partnering with Promise 1000's home visiting programs, support begins before a child ever takes their first steps.

Home visiting can start during pregnancy or infancy—when parental questions are still forming and uncertainty can feel overwhelming—and continue through the first 1,000 days of life. Home visitors provide support and guidance to parents; empower caregivers to take charge of their child's health, as well as their own; and celebrate shared wins. These visits are not just about instruction. They are about building trusted relationships.

Home visitors start by noticing what a family brings – their care, their resilience, their emerging routines – and responding in ways that feel steady, personal, and respectful of the family's pace.

When support arrives early, momentum gains traction because parents are able to grow confidence alongside knowledge. Stress eases. Connections deepen. What comes next feels less uncertain.



BRINGING



SUPPORT

HOME



“Everyone has a different starting point. For me, my journey began with finding the confidence to parent in the way I wanted. Through home visiting, I was exposed to resources and information that helped me believe in myself.”

— Jonnae S.

CREATING A COORDINATED



For families navigating acute instability, Avenue of Life shows up when the ground feels most unsteady and remains a steadfast presence over many years as the family evolves.

Instead of sending families through a maze of providers, supports gather around them. Housing. Education. Mental health. Employment. They are all addressed together – reducing the emotional weight of restarting at every turn.

With coordinated, long-term support, families have the space to plan and stabilize. In the process, their trajectory begins to shift.

CONNECTION

“Progress, for my family,
is celebrating the wins.
Overcoming fears.
Feeling less isolated.
And realizing the
journey isn’t just about
a destination, it’s about
growing together.”

— Carla M.



STANDING STRONGER TOGETHER

*What does
belonging build?*

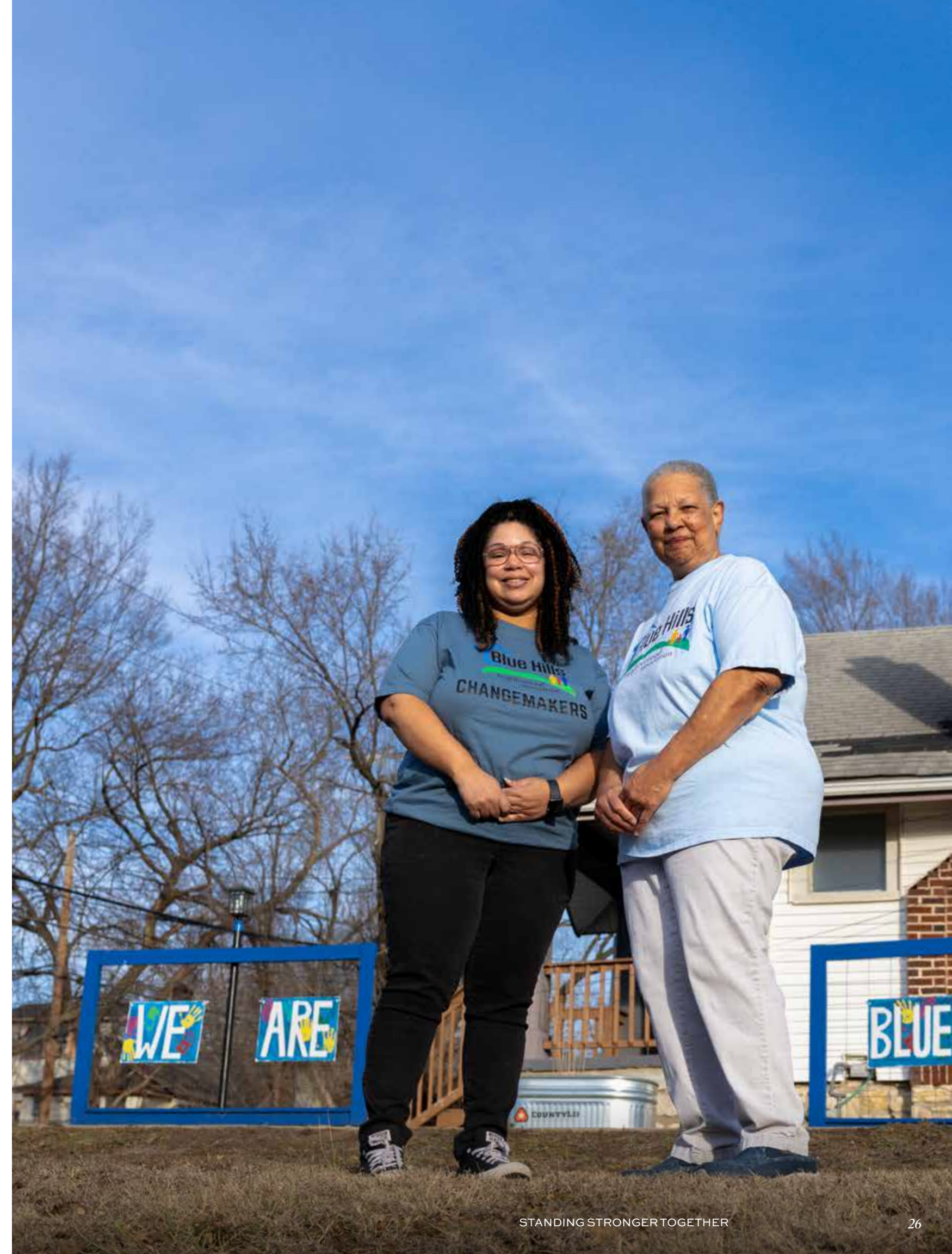
When progress expands into something more collective, support moves from reactive to encompassing. From one trusted voice to many. From feeling helped to feeling connected.

Shared strength forms when families realize they are not carrying everything alone.

When neighbors come together. When parents find peers. When lived experience is recognized not as something to overcome, but as something to lead from.

This is created by building belonging. When families see themselves reflected in others. When confidence grows and feels reinforced by community.

When strength is shared, it endures.



STRENGTH



FROM

WITHIN

Across Kansas City, shared strength takes root where neighbors are trusted to lead.

Community Capital Fund supports residents in identifying what their communities need most and acting on it. Microgrants become visible wins that build confidence and demonstrate what is possible when leadership is activated close to home.

Neighbors who once moved in parallel begin moving together, accessing support when they require it. As confidence grows, leadership follows. Something owned and sustained from within.





“When residents realize their ideas have merit, they’re more likely to speak up. And when those ideas become real, they step forward again the next time opportunity shows up.”

— Judy B.

LIVED EXPERIENCE



For many parents working to shape a stronger future for their children and communities, shared strength emerges through voice.

Parents already carry deep knowledge of their children, their schools, and their communities. Parent Leadership Training Institute - Kansas City provides space for parents to learn together, share their stories, and act collectively. This lived experience becomes influence. Certainty builds. Language sharpens. Parents create a path to move from being present in systems to being heard within them.

Leadership takes root, not as an individual achievement, but as a shared practice. It is reinforced by relationships, strengthened through the collective, and extended into the systems that shape daily life. Not in isolation, but in community. When strength is shared, momentum builds from within.



MEETS LEADERSHIP

“Progress means celebrating positive changes, both big and small. As parents, we’ve learned the changes that last are often the ones we don’t have to force. Presence is progress.”

— Natasha & Damon B.



STAYING PERSISTENTLY PRESENT

*What does persistent
presence protect?*

Strength solidifies not just when things are moving forward but also when they slow. When life shifts. When momentum pauses, bends, or takes an unexpected turn.

Stability that holds is not about resisting disruption. It's about remaining grounded through it.

This kind of stability is built on trust, not timelines. It honors the reality that families do not move in straight lines and that pauses and recalibrations are part of growth, not departures. Support that holds does not withdraw when movement is slow. It stays present. It adjusts. It responds with care.

This creates a different kind of confidence. Families are not pressured to rush or simply go through the motions – they are trusted to regroup, rebuild, and keep moving forward at a pace that reflects real life.



MAKING PRESENCE

A PROMISE



Phoenix Family Housing Corporation is embedded in the neighborhoods it serves. Help is available before challenges escalate. Daily interactions allow early signs of instability to be noticed and addressed. Coaching unfolds over years, not weeks.

Even when families move, relationships often remain.

Within this steady presence, progress accumulates quietly. Literacy mentorship builds confidence over time. Life coaching breaks overwhelming goals into manageable steps. Each win is recognized without pressure. Momentum builds.

Families begin to plan. To invest in their own potential. To move into their strength.



“Progress is showing up
and staying committed.
It’s moving forward
despite barriers.”

— LeCreasha G.

*What does
belief unlock?*

CREATING PATHS FORWARD

Potential reaches its fullest expression when families are not confined to the urgency of today but supported to imagine and prepare for what comes next – clearly, confidently, and on their own terms.

Goals become attainable when they are accompanied by guidance that is personal, support that is reliable, and relationships that endure through moments of doubt and disruption. Progress is not the result of a single intervention but of sustained alignment among aspiration, support, and systems that are willing to stay.

When people have trusted supporters who know their goals, their pressures, and their lived experience, pathways forward become visible and navigable. When financial barriers are reduced, persistence becomes possible with focus and dignity. When families are engaged as partners rather than observers, progress becomes collective and sturdier.

Futures are shaped when uncertainty no longer dictates every decision. When students can plan beyond the next semester and families can invest in long-term goals without abandoning their present realities. This is what happens when families are recognized as authors of their own path, and support systems align with the strengths, knowledge, and resilience they already possess.

When systems remain steady, students do too.



CARRYING

BELONGING

FORWARD



For students supported by the Hispanic Development Fund, futures take shape through persistence, agency, and a deep sense of belonging rooted in relationships and trust.

Advising that centers student voice and long-term planning. Family engagement that reflects how decisions are made collectively. Emergency support that stabilizes in critical moments before they become turning points in the wrong direction.



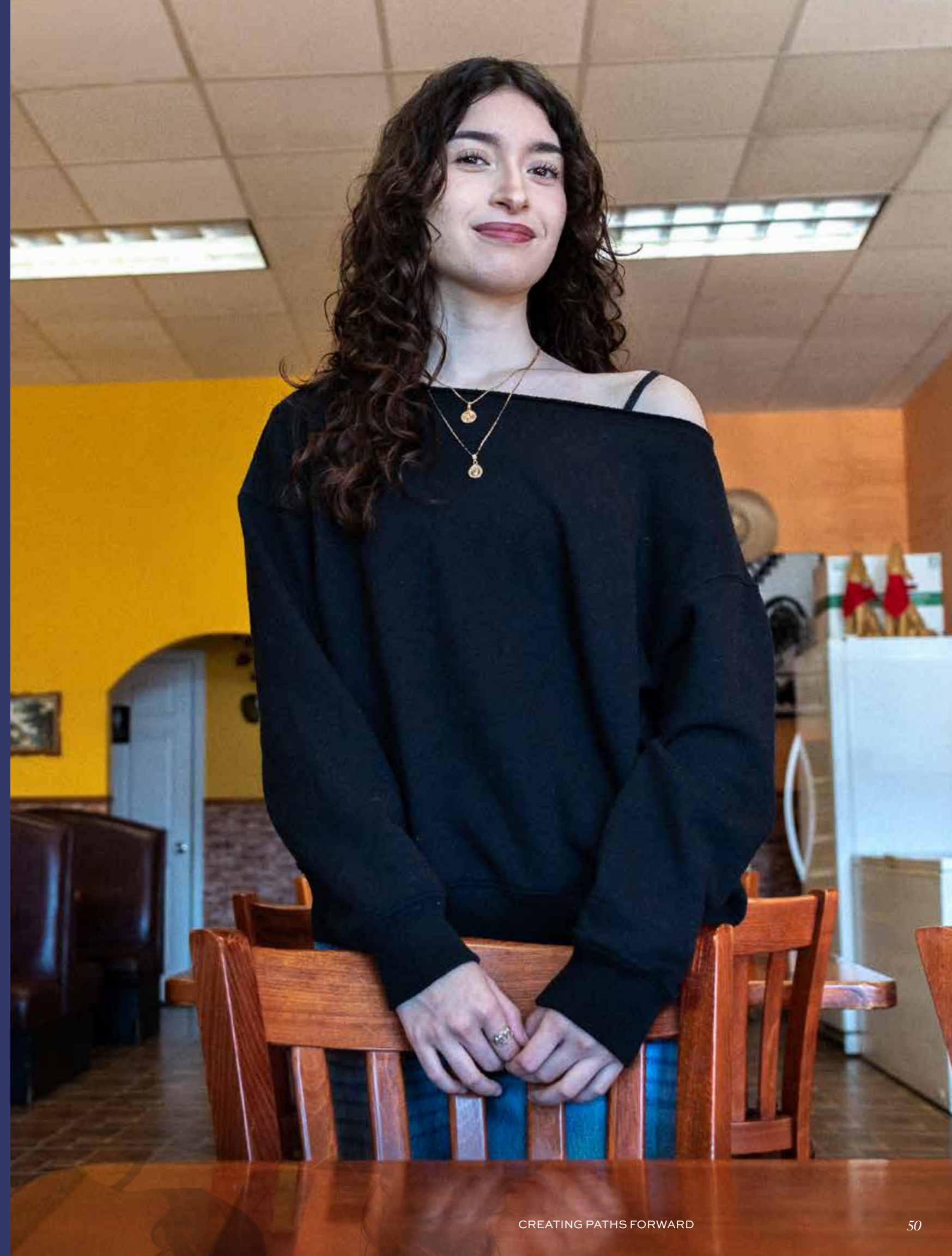
Students remain enrolled not because obstacles disappear but because support adapts. As students advance, families advance with them strengthening confidence, reinforcing aspiration, and reshaping what is possible for the next generation. College shifts from exception to expectation.

Momentum builds. Progress compounds.



“To my family,
progress means
moving forward
even when
things aren’t easy.
Learning from
our past. Pushing
ourselves to do
better.”

— Karely F.



PROGRESS IS HOW FAR WE GO



When we expand our definition of progress, we fundamentally change what we value.

We stop measuring how fast families move through organizations and systems and start measuring how well organizations and systems respond to the strengths, aspirations, and realities families bring with them. Progress becomes less about acceleration and scale and more about alignment between opportunity, trust, and sustained support.

Across Kansas City, families are building stability, shaping opportunity, and investing in what comes next. Early guidance establishes direction before uncertainty takes hold. Persistence sustains it when the path gets harder. Presence ensures no one loses ground in the in-between. Pathways remain open because belief is reinforced by action not just intention.

This work is not static. It evolves as needs evolve. It deepens as trust grows. And it expands as more people recognize what is possible when we lead from abundance, shared responsibility, and belief in collective potential.

Kansas City thrives when *all* families thrive.

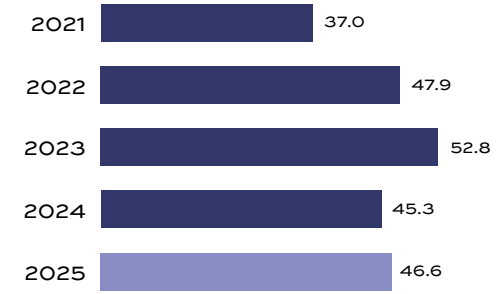
TOGETHER





Financials

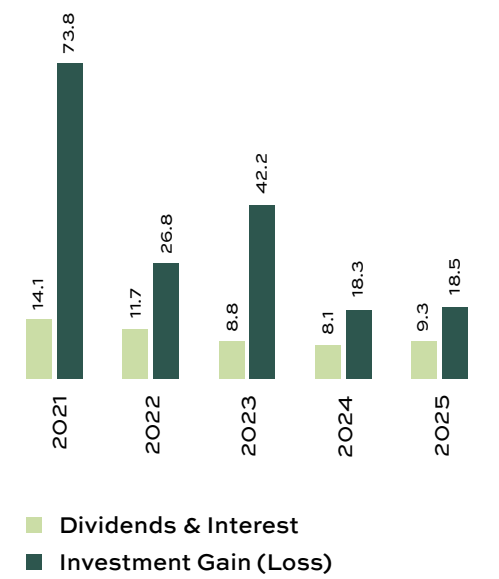
Contributions Made
In Millions of Dollars*



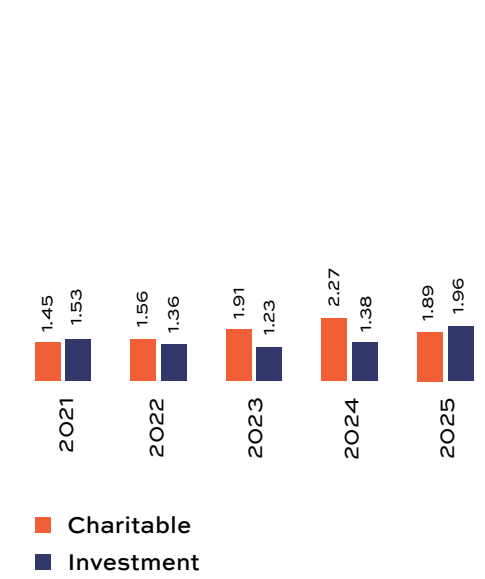
Assets
In Millions of Dollars*



Income
In Millions of Dollars*



Expenses
In Millions of Dollars*



2025 Partners

Organization & Project Title	Grant Amount	Amount
Ad Hoc Group Against Crime Center for Justice and Healing Capital Campaign*	\$450,000	\$300,000
Alliance for a Healthy Kansas Education and Advocacy for Increased Access to Healthcare	\$100,000	\$100,000
American Public Square, Inc. Program Support	\$50,000	\$50,000
Art as Mentorship Capacity Building and Rebel Song Academy Expansion*	\$100,000	\$50,000
ArtsKC Regional Arts Council Program Support	\$100,000	\$100,000
Avenue of Life, Inc. Impact KCK and KCPS Empowerment Program Support*	\$1,500,000	\$500,000
Base Academy of Music Program Expansion Support*	\$60,000	\$30,000
Boys & Girls Clubs of Greater Kansas City Program Support and Club Lit Expansion*	\$1,750,000	\$500,000
Brothers Liberating Our Communities Teacher Support*	\$75,000	\$50,000
Camp Fire Heartland Summer Education in Wyandotte County	\$48,550	\$48,550
Caring for Kids Network, Inc. Program Support and Capacity Building 2025 Program Support and Capacity Building 2026	\$100,000 \$75,000	\$100,000 \$75,000
CASA of Johnson & Wyandotte Counties Expansion of Child Advocacy Services	\$50,000	\$50,000
Catholic Charities of Northeast Kansas Pathways to Financial Prosperity	\$900,000	\$300,000
Center for Conflict Resolution Violence Prevention and Restorative Justice for Youth and Adults	\$75,000	\$75,000
Charlotte Street Foundation Program Support	\$150,000	\$150,000

*Indicates payment on previous grant award.

Organization & Project Title	Grant Amount	Amount
CHES - Credit & Homeownership Empowerment Services Let's Make Home the Goal Homeownership Program*	\$1,000,000	\$500,000
CHWC, Inc. Wealth Building Initiatives*	\$1,000,000	\$500,000
City Year Kansas City Program Support*	\$750,000	\$250,000
Community Builders of Kansas City Program Support*	\$800,000	\$400,000
Community Capital Fund Neighborhood Capacity Building Support Ecosystem Support	\$1,200,000 \$250,000	\$400,000 \$250,000
Community Health Council of Wyandotte County Kansas Assistance Network	\$100,000	\$50,000
Community LINC Elevated Transitional Housing Program Support	\$80,000	\$80,000
Community Services League Wealth & Asset Development Programming	\$600,000	\$200,000
Della Lamb Community Services, Inc. Early Education and Community Engagement* <i>Anchors of Tomorrow</i> Operating and Capacity Building Support	\$75,000 \$335,000	\$25,000 \$167,500
EarlystART Teacher Recruitment and Retention Support* <i>Anchors of Tomorrow</i> Operating and Capacity Building Support	\$58,000 \$317,000	\$29,000 \$158,500
Education Strategy Consulting, Inc. Missouri Data Quality and Portal Redesign*	\$540,000	\$180,000
El Centro, Inc. Bienvenido a Mi Casa Homeownership Program Teacher Recruitment and Retention Support* <i>Anchors of Tomorrow</i> Operating and Capacity Building Support	\$100,000 \$112,000 \$309,000	\$100,000 \$56,000 \$200,000
Emmanuel Family & Child Development Center Teacher Recruitment and Retention Support* <i>Anchors of Tomorrow</i> Operating and Capacity Building Support	\$136,000 \$431,000	\$68,000 \$215,500

*Indicates payment on previous grant award.

2025 Partners

Organization & Project Title	Grant Amount	Amount
Entitled Learning Summer Learning Programming	\$50,000	\$50,000
First Call Program Support*	\$150,000	\$50,000
Friends of Chamber Music Educational and Community Engagement Initiatives	\$60,000	\$20,000
Frontier Schools Literacy Support	\$180,000	\$90,000
Futures First Growing Together: Strengthening the Early Childhood Ecosystem	\$500,000	\$250,000
Goodwill Western Missouri & Eastern Kansas Excel Center Kansas City	\$37,250	\$37,250
Gordon Parks Elementary School Literacy Support	\$130,000	\$65,000
Grandview Assistance Program Program Support*	\$65,000	\$15,000
Greater Kansas City Community Foundation Black Community Fund - Postsecondary Education Support* Regional Housing Partnership Community Projects	\$200,000 \$2,000,000 \$4,500,000	\$70,000 \$2,000,000 \$4,500,000
Growing Futures <i>Anchors of Tomorrow</i> Operating and Capacity Building Support	\$394,500	\$197,250
HappyBottoms Community Diaper Distribution Program	\$160,000	\$80,000
Harvesters Program Support	\$500,000	\$500,000
Hispanic Development Fund - Greater Kansas City Community Foundation Educator and Social Worker Pipeline Initiative* Program Support*	\$324,250 \$506,000	\$113,250 \$252,000
Holy Rosary Credit Union Building Financial Stability in Kansas City's Historic Northeast	\$250,000	\$85,000

*Indicates payment on previous grant award.

Organization & Project Title	Grant Amount	Amount
Hope House, Inc. Program Support	\$50,000	\$50,000
i.c.stars Technology Careers Training Program	\$300,000	\$150,000
IFF Support for Kansas City Nonprofits	\$100,000	\$100,000
Jackson County CASA Child Advocacy Services	\$100,000	\$100,000
Jewish Vocational Services of Kansas City Support Services	\$75,000	\$75,000
Johnson County Community College Foundation Arts Education Program Support	\$30,000	\$30,000
Kanbe's Markets Healthy Corner Store Growth	\$600,000	\$300,000
Kansas City Kansas School Foundation For Excellence Teaching Fellows Program* Literacy Support	\$1,050,000 \$800,000	\$241,537 \$400,000
Kansas City Museum Foundation, Inc. Neighborhood Focused Exhibition	\$75,000	\$75,000
Kansas City Public Schools Education Foundation KCPS Empowerment and KCPS Student Success* Literacy Support	\$1,420,000 \$600,000	\$125,000 \$300,000
Kansas City Repertory Theatre, Inc. KCRep for All and Student Matinee Series*	\$750,000	\$250,000
Kansas Parents as Teachers Association Supporting Care Providers of Kansas Program	\$300,000	\$150,000
Kansas State College Advising Corps College Advising in Kansas City Schools*	\$375,000	\$125,000
Kansas University Endowment Association University of Kansas Cancer Center Capital Campaign*	\$25,000,000	\$5,000,000

*Indicates payment on previous grant award.

2025 Partners

Organization & Project Title	Grant Amount	Amount
KC Asylum Clinic Support Services	\$60,000	\$60,000
KC Uncornered Program Support	\$1,300,000	\$600,000
Lead to Read Capacity Building: Reading Mentor Training Program Pilot	\$80,000	\$80,000
Learning Club of KCK Program Support	\$100,000	\$50,000
Legal Aid of Western Missouri Debt Relief Project	\$100,000	\$100,000
Mattie Rhodes Counseling & Art Center Community Behavioral Health Services	\$300,000	\$150,000
Metropolitan Lutheran Ministry Minor Home Repair & Housing Opportunity Program Support*	\$200,000	\$100,000
Mid-America Regional Council Community Services Corporation Double Up Fresh Produce Program*	\$300,000	\$100,000
Missouri Charter Public School Association Program Support*	\$423,000	\$143,000
Missouri Department of Elementary and Secondary Education Strategic Support	\$100,000	\$40,000
National World War I Museum and Memorial Story of the Museum and Memorial Exhibit	\$200,000	\$100,000
Nelson Gallery Foundation Payoff of Existing Revenue Bonds (2004-34)* Interest Paid and Refinancing Charge on Outstanding Bond Since 2004* Photography Collection 2024-2026*	\$60,000,000 \$4,500,000	\$6,000,000 \$1,206,393.68 \$1,500,000
New Community Church Eastside University	\$84,000	\$84,000
Newhouse Intake and Healing Center Capital Campaign*	\$100,000	\$100,000

*Indicates payment on previous grant award.

Organization & Project Title	Grant Amount	Amount
Northeast Community Center Path to College Program Support*	\$129,000	\$43,000
Nurture KC Promise 1000 - Home Visiting Collective	\$225,000	\$125,000
Operation Breakthrough Capacity Building in Support of MINDDRIVE Integration Teacher Recruitment and Retention Support* <i>Anchors of Tomorrow</i> Operating and Capacity Building Support	\$100,000 \$100,000 \$571,000	\$100,000 \$50,000 \$285,500
Parent Leadership Training Institute - KC Parent Training Program and Early Years Parent Collective Launch	\$92,000	\$92,000
Pawsperity, Inc. Program Support	\$400,000	\$200,000
People Of All Colors Succeed Organization Program Support*	\$100,000	\$25,000
Per Scholas Technology Careers Training Program	\$300,000	\$150,000
Phoenix Family Housing Corporation Pathways to Self-Sufficiency Initiative	\$75,000	\$75,000
Plaza Academy Mental Health Programming Support*	\$100,000	\$35,000
Project Eagle Teacher Recruitment and Retention Support* <i>Anchors of Tomorrow</i> Operating and Capacity Building Support	\$82,000 \$307,375	\$41,000 \$155,375
SafeHome, Inc. Family Prosperity Program and Safety Advocate*	\$324,478	\$110,245
Salvation Army - Kansas City Pathway of Hope	\$700,000	\$450,000
Samuel U. Rodgers Health Center Pediatric Wing Expansion Capital Campaign*	\$3,000,000	\$1,000,000
SchoolSmart KC Pre-K Cooperative*	\$630,900	\$150,000

*Indicates payment on previous grant award.

2025 Partners

Organization & Project Title	Grant Amount	Amount
Screen Sanity, Inc. Pediatric Provider Program	\$30,000	\$30,000
Scuola Vita Nuova Charter School Literacy Support	\$200,000	\$100,000
Shawnee Mission Education Foundation Jump Start to Learning Program Support Longitudinal Study on Impact of Early Education	\$29,550 \$10,000	\$29,550 \$7,500
Sheffield Place Capital Campaign Support*	\$350,000	\$175,000
Shelter KC Capital Campaign Support*	\$150,000	\$150,000
SparkWheel, Inc. Program Support*	\$200,000	\$100,000
Starlight Theatre Association, Inc. Support for 'A Campaign for Starlight'*	\$2,500,000	\$166,667
Start at Zero Family-Centered Fellowship for Early Childhood Systems Innovation	\$65,000	\$65,000
StartingEarly Program Support*	\$1,250,000	\$250,000
Synergy Services, Inc. Synergy House Shelter and Youth Counseling Program Support*	\$300,000	\$100,000
Teach for America - Kansas City Advancing Teacher Retention & Leadership in Kansas City Schools	\$300,000	\$150,000
Teachers Like Me Program Support	\$382,600	\$198,800
The Children's Place Early Childhood Mental Health Provider Workforce Development	\$300,000	\$150,000
The Sewing Labs Sewing Salon Training Program	\$150,000	\$75,000
Trust Neighborhoods Capacity Building for the Northeast Neighborhood Trust*	\$500,000	\$100,000

*Indicates payment on previous grant award.

Organization & Project Title	Grant Amount	Amount
Unified Government of Wyandotte County/ Kansas City, Kansas Wyandotte County Health Equity Task Force	\$87,000	\$87,000
University Health Charitable Foundation Delivering Hope: Women's Care Capital Campaign*	\$1,000,000	\$500,000
University of Central Missouri Grow Your Own: Para Educator to Certified Teacher*	\$375,000	\$125,000
University of Missouri Kansas City Foundation Urban Education Research Center - Literacy Evaluation* Institute for Urban Education* KCSOURCELINK* Center for Neighborhoods: Community Impact Fellows* Student Success Support* UMKC Healthcare Innovation and Delivery Building*	\$272,500 \$1,200,000 \$62,500 \$70,000 \$500,000 \$15,000,000	\$166,000 \$400,000 \$12,500 \$35,000 \$250,000 \$5,000,000
Vibrant Health Program Support	\$11,000,000	\$2,000,000
Westside Community Action Network Community Education and Readiness Program*	\$60,000	\$20,000
What If Puppets Early Childhood Arts-Integrated Residencies	\$100,000	\$50,000
Wyandot Behavioral Health Network Downtown Behavioral Health Expansion Capital Campaign*	\$500,000	\$250,000
YMCA of Greater Kansas City SPARK Summer Program and Behavioral Support	\$142,500	\$142,500
Youth Volunteer Corps Program Support	\$100,000	\$50,000
Total Grant Amount Paid in 2025	\$46,590,367.68	

*Indicates payment on previous grant award.

Board of Directors

Donald J. Hall, Jr.
 Chairman of the Board, Hall Family Foundation
 Executive President of the Board, Hallmark Cards, Inc.

William S. Berkley
 President and Chief Executive Officer, Tension Corporation

Peggy J. Dunn
 Community Volunteer

Richard C. Green, Jr.
 Managing Director, Avrion, LLC

Irvine O. Hockaday, Jr.
 Retired President and Chief Executive Officer,
 Hallmark Cards, Inc.

Mark Jorgenson
 Independent Corporate Director

Sandra A.J. Lawrence
 Independent Corporate Director

Margaret H. Pence
 Community Volunteer

David A. Warm
 Executive Director, Mid-America Regional Council

Staff

Mayra Aguirre
 President

Sherman Whites
 Program & Grants Director

Program Team

Nicole Clifford
Rebecca Coulson
Cynthia de la Rosa
Halley French

Operations Team

Dani de León
 Grants Administrator

Maria Moore
 Executive Assistant

Debbie Whiles
 Grants Associate



W
E
R
O
E
R

W
R
A